



TORONTEK-B400 How to transfer the data to PC

User Instructions

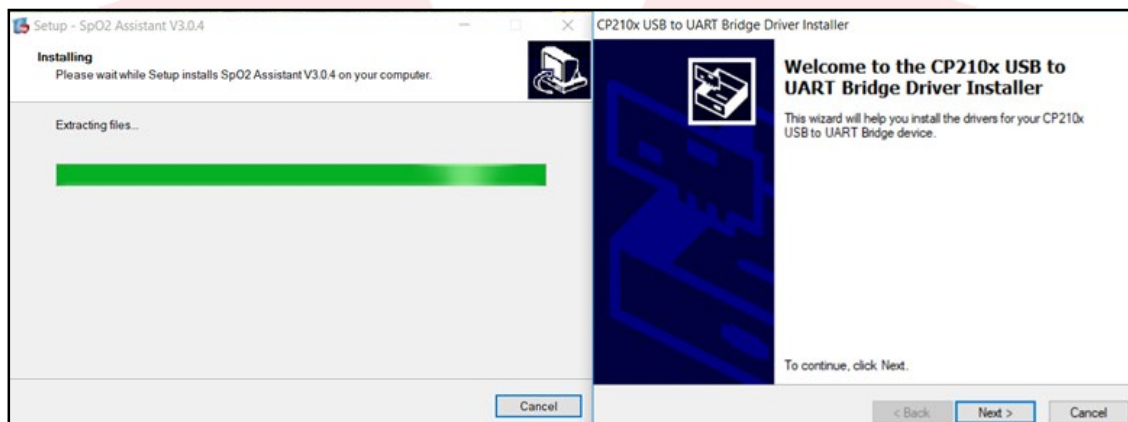
1. Install the software on Windows or MAC PC. The device Windows software is on the mini disc included in the original product package. In case there is no disc drive on the computer, the software can be alternatively downloaded from below page. Mac software is available online on the following link as well.

<http://torontek.com/product/torontek-b400/>

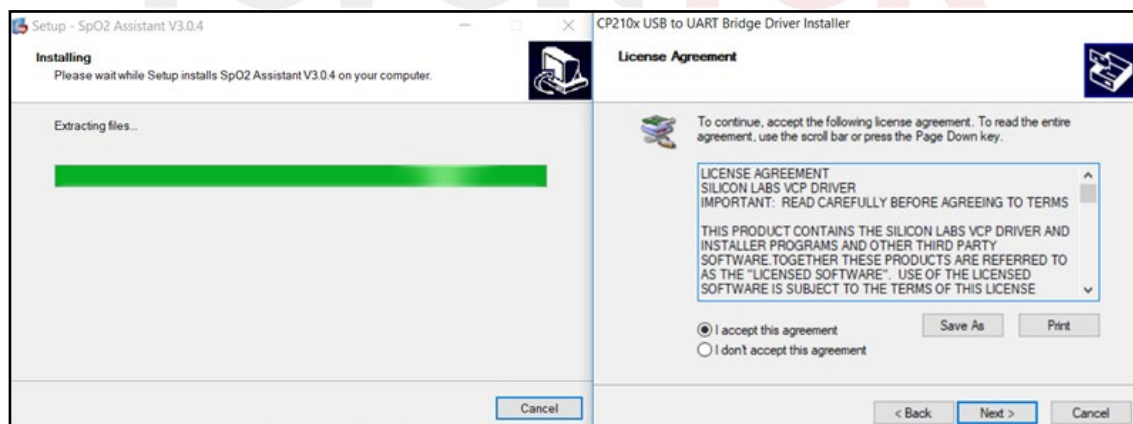
Note:

In case the Anti-virus software on the computer blocks the execution or automatically removes the set-up file the software installation fails. User need to allow the execution of this file through the anti-virus setting. The company which is the provided of the antivirus software can help in this process if needed.

2. On the first installation depending on the PC model and operating system model there might be a prompt to install the “CP210XUSB to UART Bridge driver installer”. If the prompt did not come up as below proceed with the software installation. If the device was not found at later stages which are described below it indicates the need to install the Bridge driver by searching on the internet.



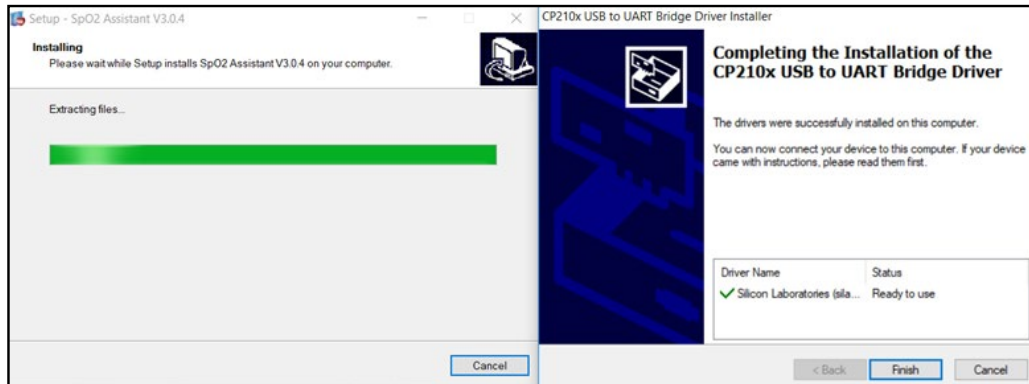
3. By agreeing to terms and conditions the user will be advancing to the next step of installation



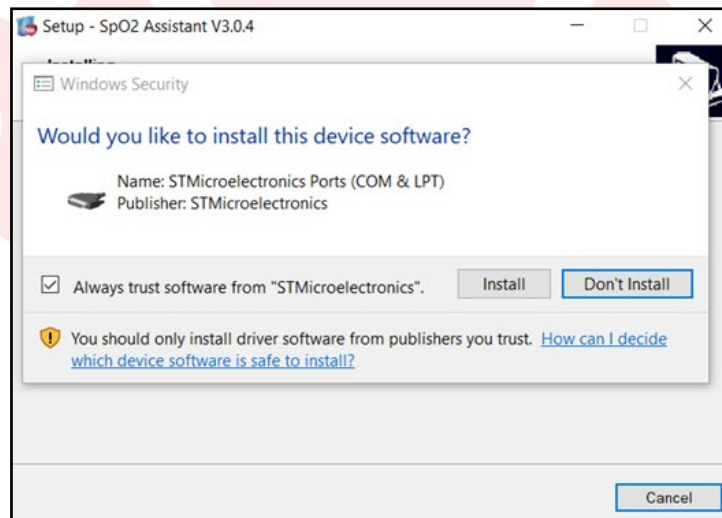


TORONTEK-B400 How to transfer the data to PC

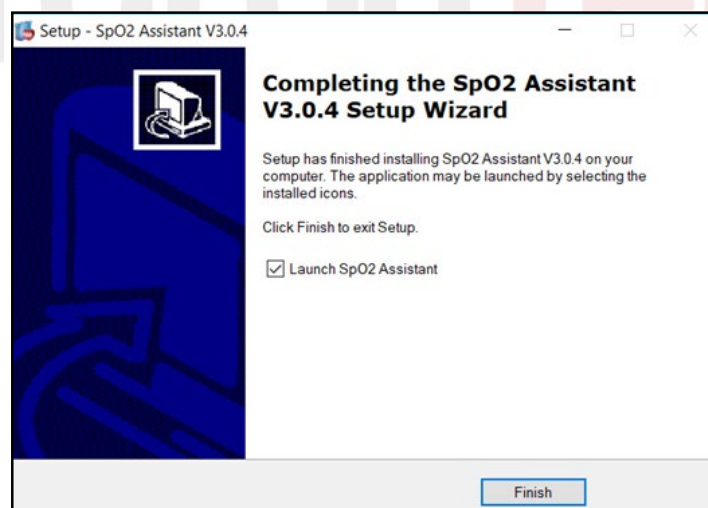
4. If the installation is completed successfully the below message will be shown and by clicking on “Finish”, the process is properly executed



5. In stage 4 the USB driver bridge was installed and the SPO2 Assistant can be installed as the prompt indicates below- by selecting install the process is initiated.



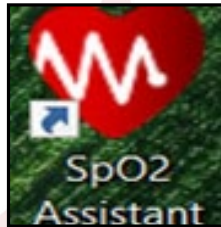
6. Congratulations. If below windows is coming up it means the software is properly set up. Select Finish and if the Launch SPO2 Assistant is selected you the software will be opened automatically.





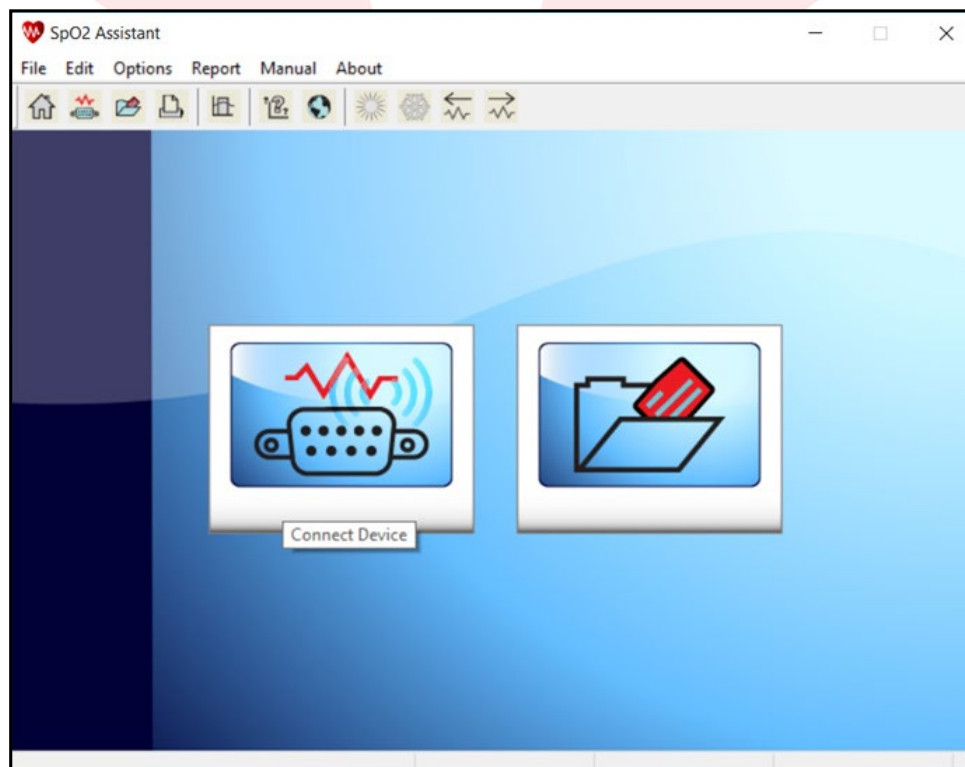
TORONTEK-B400 How to transfer the data to PC

7. **CRITICAL ACTION:** If on earlier stages the USB bridge was installed it is absolutely necessary to restart the system.
8. After restarting the software can be opened by clicking on the Red heart icon on the desktop



9. The main software interface is opened similar to following window.

CRITICAL ACTION: If there is recorded data available on the device the user need to first SWITCH ON the device and use the USB cable which was in the original package to connect the unit to PC USB port. (Other cables with the same socket are not compatible for this data transfer process)





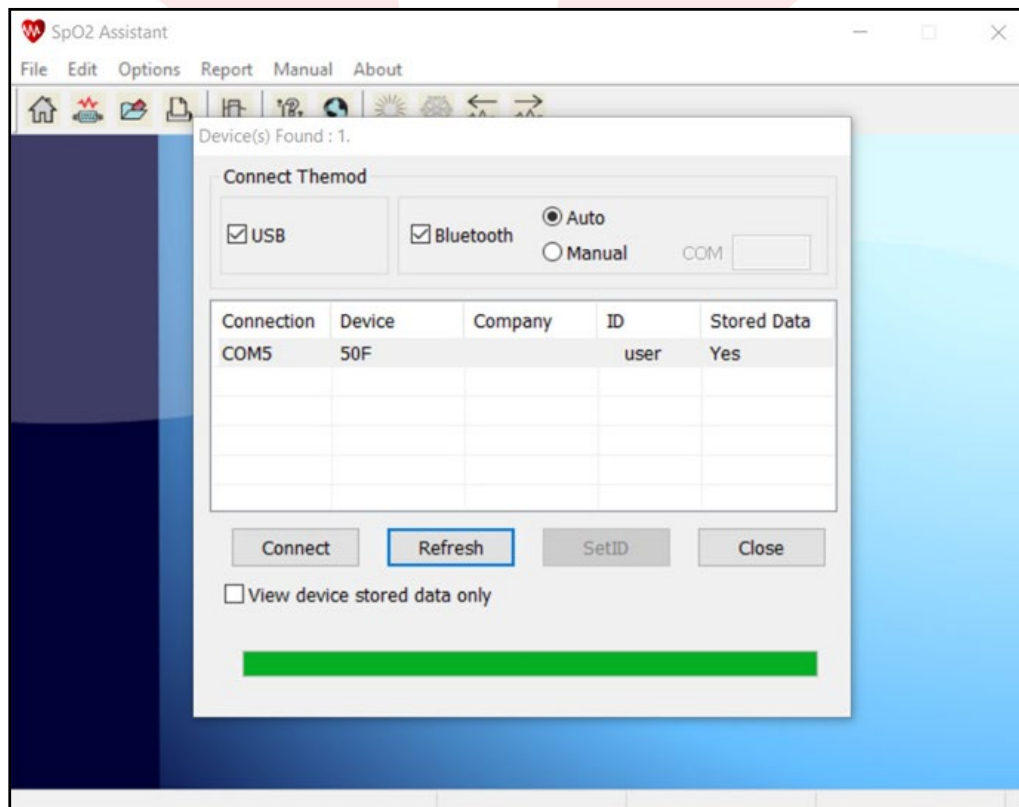
TORONTEK-B400 How to transfer the data to PC

10. At this stage the device technical name shows up as COM5-50F. If this device name is not shown try the below troubleshooting steps:

- The device is switched off: Make sure the USB is first disconnected- the device is turned on and USB is connected back to computer and hit refresh
- If above process did not resolve the issue try repeating the process using a different USB port on the PC
- If above processes did not resolve the issue, disconnect the USB connector form PC, close the SPO2 assistant software and again try the process.
- If above processes did not resolve the issue, uninstall the SPO2 assistant by removing the program from the Control panel, try re-installing the software and repeat the process.
- If above processes did not resolve the issue, try the process on a different PC to make sure there is no USB port issue with the PC.

CRITICAL ACTION

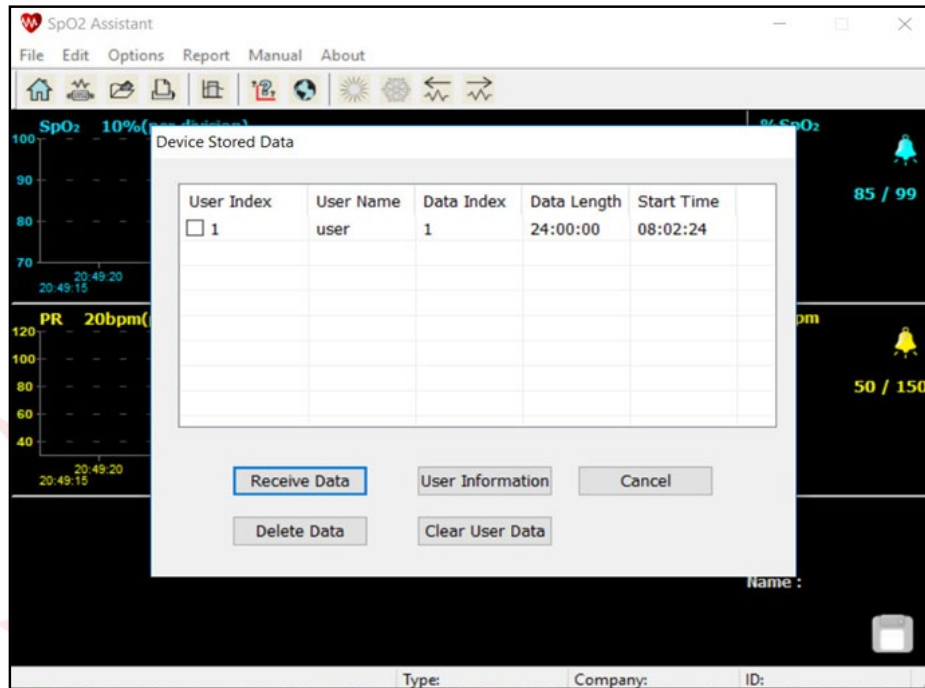
Select the “VIEW DEVICE STORED DATA ONLY” before clicking CONNECT



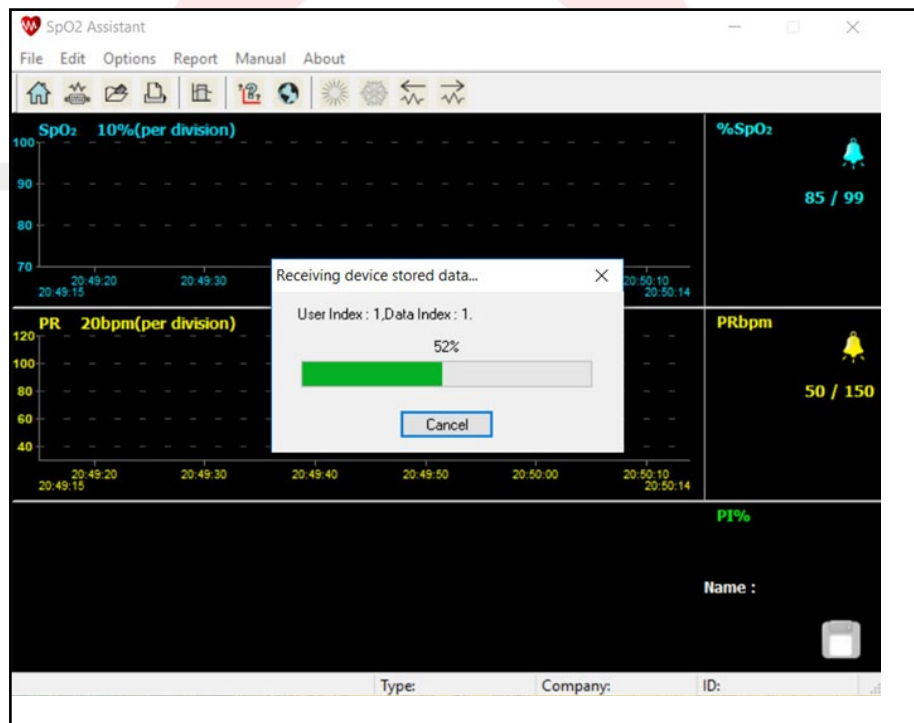


TORONTEK-B400 How to transfer the data to PC

11. Next step the user name is shown by default as “User” Make sure the USER is highlighted and selected then click on “Receive data”



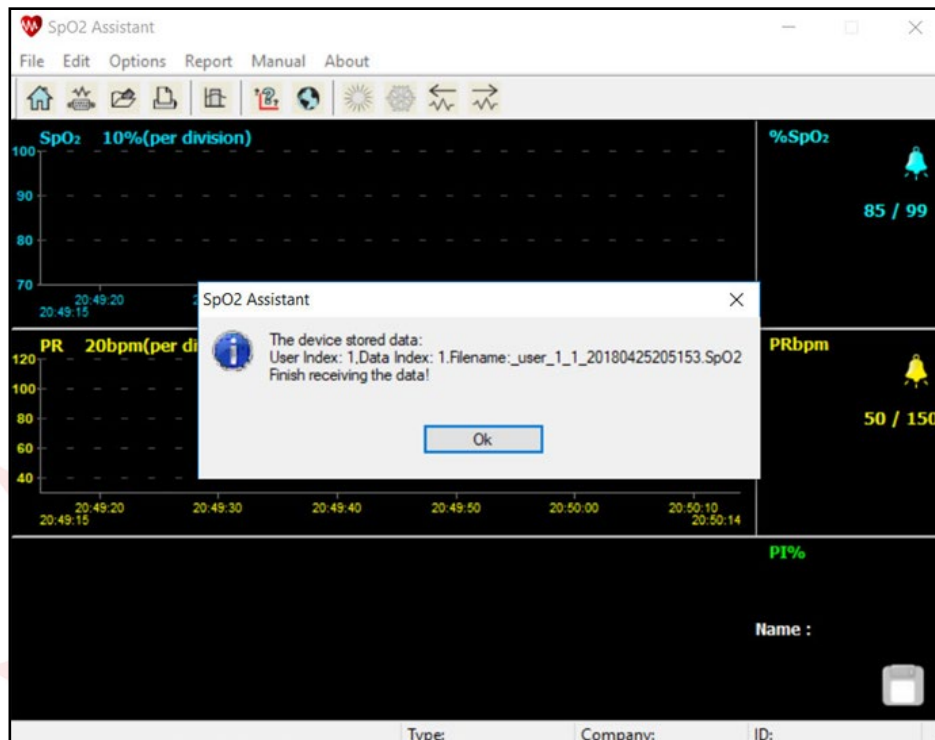
12. Upon selecting the Receive data, the upload starts automatically showing the upload process to 100%



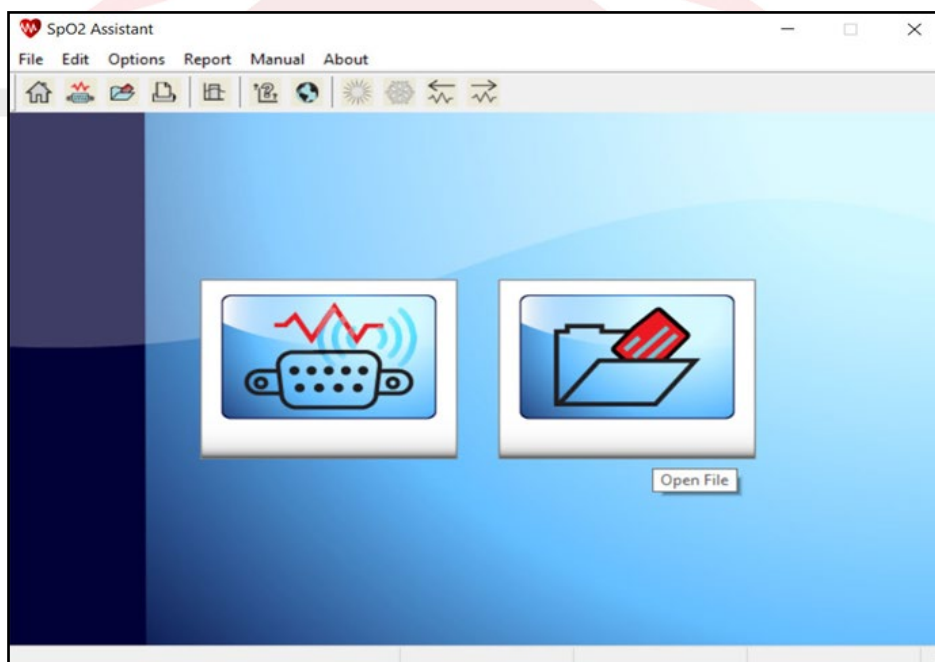


TORONTEK-B400 How to transfer the data to PC

13. The prompt indicates that the upload has been successfully completed.



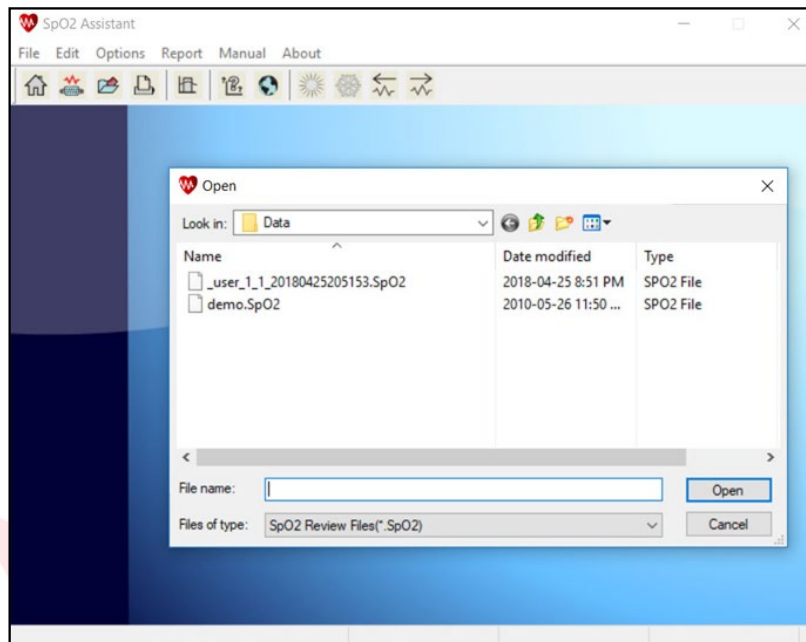
14. When the upload process is done the software home icons are displayed. To open the recently uploaded file simply click on the OPEN file icon on the right hand side



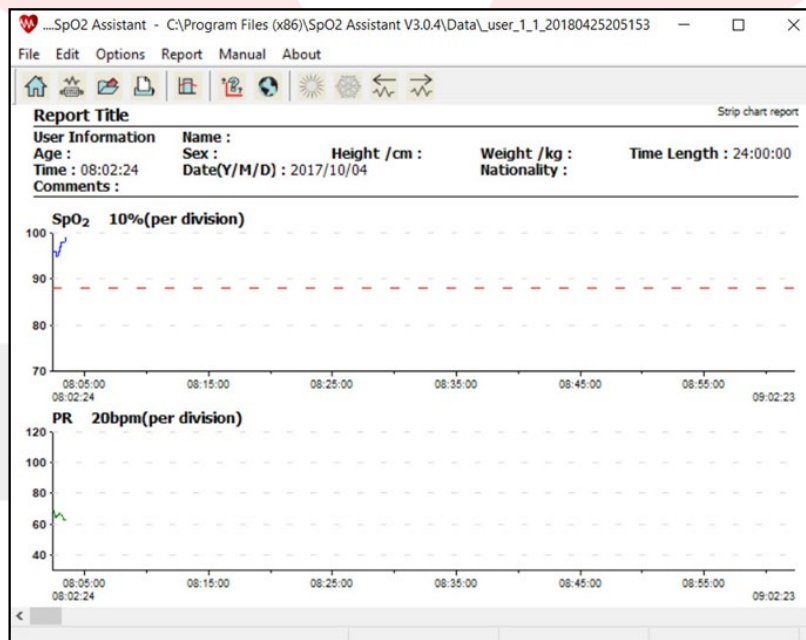


TORONTEK-B400 How to transfer the data to PC

15. Select the name of the file which has just been uploaded and hit open



16. The report is shown with the user information and the time of recording.



IMPORTANCE NOTICE

ToronTek-B400 is equipped with super compact memory chip which can record ONE session at a time. So when user records a data irrespective of the length of the recording, is important to transfer the data to the PC before starting another recording session. Starting the second recording session without transferring the first set of data simply overwrites the first recorded data on the device.